

# XL TRUNKING 201 AND 202



'Bio option' available to special order

XL Trunking 201 and 202 are deep, large capacity 3 compartment, segregated containment systems.

### Product information

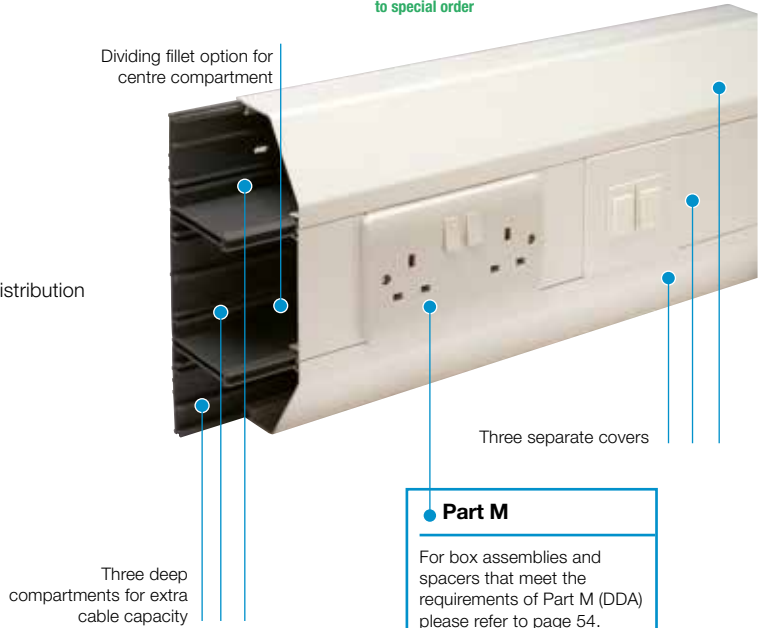
- 220 x 65mm
- 1 full and 2 half size compartments
- XL201 for dado installation only
- 3 deep segregated compartments
- Can be subdivided
- Suitable for dado and skirting application
- Can be fed from larger trunking systems for increased cable distribution
- Boxes available to comply with Part M (DDA)
- Comprehensive range of flush power and data accessories
- Self extinguishing and non-flame propagating PVC-U

### Data information

- Compliant up to Cat 7a\*
- Adjustable data box 32-47mm
- Screened data boxes
- Steel screening divider available to BS EN 50714-2

See page 92 for quick reference chart

<b>Standard Colour</b>
WH
WH: White



**Part M**  
For box assemblies and spacers that meet the requirements of Part M (DDA) please refer to page 54.

Trunking profiles



**XL201**  
size 220 x 65mm



**XL202**  
size 220 x 65mm

**REASSURINGLY RECYCLED**  
OUR XL BUILT UP PROFILES ARE MANUFACTURED USING THE FOLLOWING PERCENTAGES OF RECYCLED MATERIAL.  
XL201 70%  
XL202 71%

**\*Data fittings**  
For made to order fittings to meet Cat 7a requirements please contact our Technical Team on +44 (0)1424 856688

Basic components



**Base unit**  
code ELTB200 pack 4 x 3m



**Main compartment cover**  
code ETL1WH pack 8 x 3m



**Angled cover**  
code ELAC200WH pack 8 x 3m



**Square cover**  
code ELSC200WH pack 8 x 3m

p252  
Technical Information

PVC-U PERIMETER TRUNKING SYSTEMS

XL201 fittings



<b>XL201 Coupler</b>	
code	pack
EC201WH	5



<b>XL201 End cap</b>	
code	pack
EEC201WH	5
Universal for both LH & RH	



<b>XL201 Internal bend</b>	
code	pack
EIB201WH	5



<b>XL201 External bend</b>	
code	pack
EXB201WH	5



<b>XL201 Flat angle</b>	
code	pack
EFA201WH	1



<b>XL201 Flat tee</b>	
code	pack
EFT201WH	1

XL202 fittings



<b>XL202 Coupler</b>	
code	pack
EC202WH	5



<b>XL202 End cap</b>	
code	pack
EEC202LHWH (Left hand)	5
EEC202RHWH (Right hand)	5



<b>XL202 Internal bend</b>	
code	pack
EIB202WH	5



<b>XL202 External bend</b>	
code	pack
EXB202WH	5



<b>XL202 Flat angle - upward</b>	
code	pack
EFA202UWH	1



<b>XL202 Flat angle - downward</b>	
code	pack
EFA202DWH	1

Components



Dividing fillet	
code	pack
ELDF200	8 x 3m



Steel screening divider	
code	pack
ESF200	1 x 1.5m

**Note:** optional steel screening divider to assist in compliance with BS EN 50174-2



Steel screening divider bonding strap	
code	pack
ESF2	5



Bonding strap	
code	pack
ESBS1	5

Boxes and plates



*RCD/MCB Housing	
code	pack
EAHC1MWH	1

\*Up to 4 modules can be accommodated

**Note:** RCDs are not supplied by Marshall-Tufflex



1 gang accessory box		
code	depth	pack
ESSB1WH	30mm	20



2 gang accessory box		
code	depth	pack
ESSB2WH	30mm	10

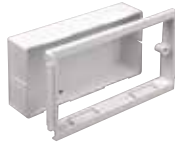


Accessory box spacer		
code	size	pack
ES1WH	14mm	4

For use between accessory boxes



1 gang adjustable depth box		
code	depth	pack
EAB1WH	32 – 47mm	10



2 gang adjustable depth box		
code	depth	pack
EAB2WH	32 – 47mm	5



1 gang accessory plate	
code	pack
ESSP1WH	2



2 gang accessory plate	
code	pack
ESSP2WH	2

Please see page 261 for more information on the range of adjustable boxes

**Part M**

For box assemblies and spacers that meet the requirements of Part M (DDA) please refer to page 54.



## Quick reference chart XL Trunking 201 and 202

### 3 Compartment

XL201	XL202
220 x 65mm	220 x 65mm



#### Base unit

Pack 4 x 3m



ELTB200	ELTB200
---------	---------

#### Main compartment cover

Pack 8 x 3m



ETL1WH	ETL1WH
--------	--------

#### Angled cover

Pack 8 x 3m



2 x ELAC200WH	ELAC200WH
---------------	-----------

#### Square cover

Pack 8 x 3m



-	ELSC200WH
---	-----------

#### Couplers

Pack 5



EC201WH	EC202WH
---------	---------

#### End caps

Pack 5



EEC201WH	EEC202LHWH EEC202RHWH
----------	--------------------------

#### Internal bends

Pack 5



EIB201WH	EIB202WH
----------	----------

#### External bends

Pack 5



EXB201WH	EXB202WH
----------	----------

#### Flat angles

Pack 1



EFA201WH	EFA202UWH EFA202DWH
----------	------------------------

#### Flat tees

Pack 1



EFT201WH	†
----------	---

#### † XL202 trunking flat tees

Where profiles have one angled cover and one square cover, as with XL202, it is possible to create a tee by changing the top or bottom cover so that covers to match the profile of the trunking. For example:

- Upward tee – select XL201 tee remove the angled bottom cover and replace with square cover.

p252

Technical  
Information